



Fodenn Electronic Technology Co., Ltd

Shanghai Add: Room 1818, No. 6088 Humin Road, Mihang district Shanghai

Shenzhen Add: 3rd floor, Building B, Runchang industrial park, Zhonghao

2 road, Bantian street, Longgang district, Shenzhen

Tel: 0755-86329789 Fax: 0755-83689236 Email: oversea1@fodenn.com

Payment Kiosk PCMT-516K



Clinics payment terminal , the basic configuration consists of a 23.6-inch touch display integrated screen, password keyboard, barcode scanner, contactless IC card reader, ID card reader, magnetic stripe reader, contact IC card reader, camera, receipt printer. It can provide a human-computer interaction interface to reduce person-to-person contact, and support contactless payment methods and contactless person authentication methods. Provide self-service medical services, divert artificial pressure, improve medical service capabilities



Fodenn Electronic Technology Co., Ltd

Shanghai Add: Room 1818, No.6088 Humin Road, Mihang district Shanghai

Shenzhen Add: 3rd floor, Building B, Runchang industrial park, Zhonghao

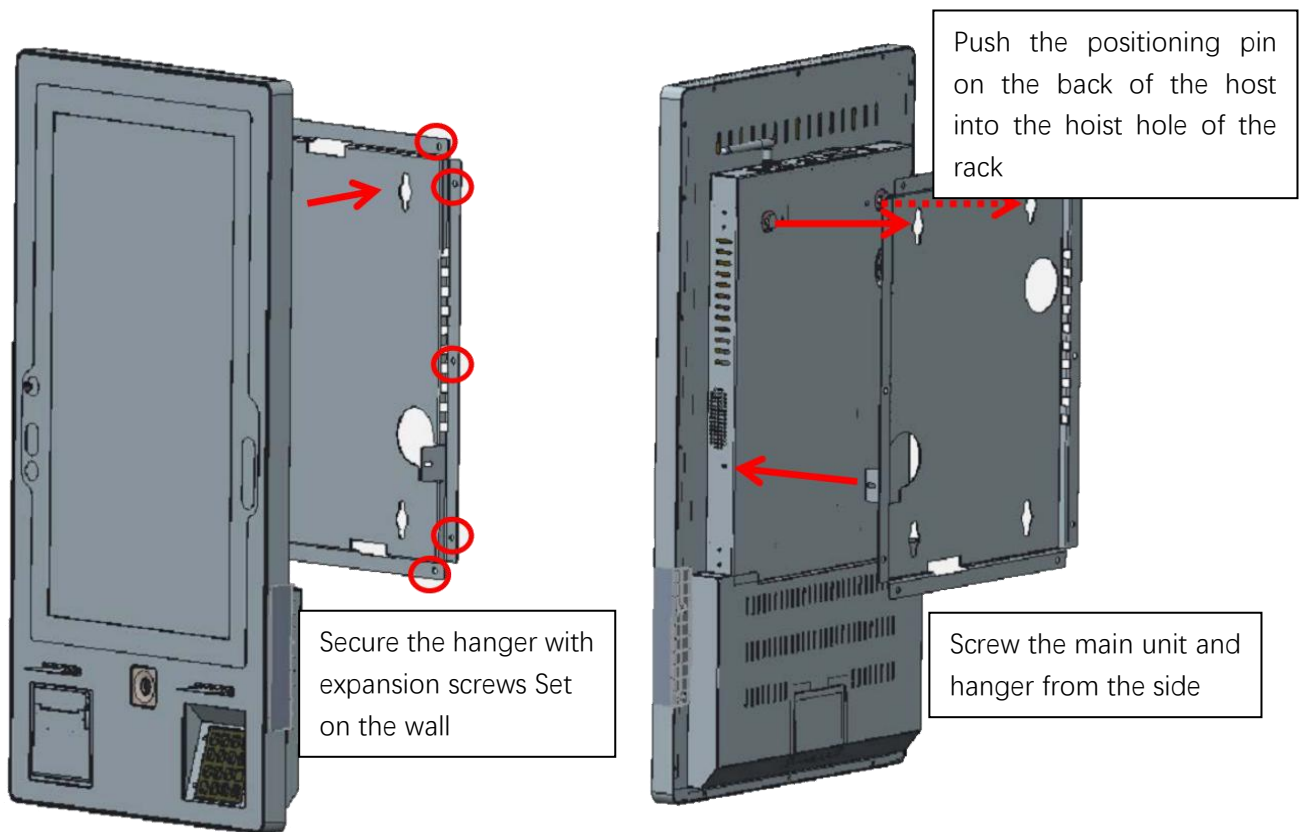
2 road, Bantian street, Longgang district, Shenzhen

Tel: 0755-86329789 Fax: 0755-83689236 Email: oversea1@fodenn.com

Function Description



Installation





Fodenn Electronic Technology Co., Ltd

Shanghai Add: Room 1818, No. 6088 Humin Road, Mihang district Shanghai

Shenzhen Add: 3rd floor, Building B, Runchang industrial park, Zhonghao

2 road, Bantian street, Longgang district, Shenzhen

Tel: 0755-86329789 Fax: 0755-83689236 Email: oversea1@fodenn.com

Specifications

Motherboard	Processor	Intel i3 7100U CPU
	Network support	RJ-45 LAN interface and LED indicator
Touch screen	Model	23.6-inch capacitive touch screen
	Interface form	USB2.0
	Response time	less than 10 milliseconds
23.6-inch LCD screen	Resolution	1920 * 1080
	Backlight	WLED
	Interface mode	EDP
Magnetic card reader	Magnetic stripe standard	ISO7810 / 7811
	Operation mode	Support 1/2/3 track reading
Contact IC card module	IC card standard	ISO7816 type 5V 5B type 3V card and support SLE4428, SLE4442, AT88SC1604 type memory card
	Card reading and writing speed	9600-96700bps
Contactless card reader	Support card type	Comply with ISO14443 Type A & B type CPU card, S50, S70 card
	Working frequency	13.56MHz \pm 7kHz
	Communication parameters	1200/2400/4800 / 9600BPS optional
	Read and write speed	106Kbps
	Contact IC card communication distance	0-30MM
Thermal printer	Printing method	Line thermal
	Print speed	75mm / sec
	Print paper width	57.5 \pm 0.5mm
	Limited printing width	58mm
	Paper processing method	Automatic paper cutting (full or half cut)
Password keyboard	Key configuration	10 numeric keys, 6 function keys
	Function support	PIN encryption, MAC operation, data encryption and decryption, remote key management
	Algorithm support	DES, Triple DES, RSA, SM2, SM3, SM4
Temperature Measurement	Optional	Support high and low temperature warning of human body, error \pm 0.2 $^{\circ}$ C above 1 meter, can support thermal imaging
Power	Voltage	110-264V
	Working environment	-20-60 $^{\circ}$ C, 20-90% RH